
Small, Independent, Progressive: The Summit's Re-Entry Plan

2020

Published July 2020

The mission of The Summit Preparatory School is to prepare learners for success by providing a progressive education with a challenging curriculum in a supportive environment.

Our Philosophy: The Summit engages each learner in reaching their highest potential. Summit learners develop curiosity, creativity, and critical-thinking skills, establishing a strong intellectual and social-emotional foundation. Collaboration with others and effective communication of independent thought are modeled and encouraged. Summit learners are partners in the process of discovering and constructing knowledge with educators providing a balance of autonomy and structure, ensuring students feel both challenged and supported. The Summit welcomes parents as active participants in the learning community.



Fall Opening of School Task Force

The Summit is well-poised to provide a safe return to campus due to our small class sizes, ability to physically distance in our generous space, and dedication to continuous and thorough cleanliness and disinfection. The Summit will open campus for the 2020-2021 academic year on August 17th.

Over the summer, The Summit's Administration, Board of Trustees, Strategic Planning Committee, Crisis Response Team, and Leadership Team have all been working in collaboration to examine, evaluate, and execute our safe return to campus this fall.

In the event we must transition to Distance Learning, The Summit faculty is developing an improved educational response plan to include more synchronous learning opportunities, streamlined technological platforms, and increased synchronous Specials instruction. Summit faculty are engaging in professional development opportunities this summer and will continue to do so into the fall to further support a successful transition to Distance Learning.

Camp Raven resumed on campus on July 6th. The Summit has developed [Summer 2020 Health, Wellness, and Safety Modifications](#) for re-entry to increase prevention and lower the risk for transmission during camp. These policies and procedures will serve to inform any necessary revisions to our proposed re-entry plan for the fall.

The Summit has also modified and updated its [COVID-19 Response Plan](#), first developed in March 2020. This plan outlines campus expectations and educational delivery responses based on risk level in the Springfield community.

Our successful and safe re-entry to campus relies on the strength of our community. Summit families and employees must model responsibility, compassion, and civic-mindedness for the benefit of all. With each of us doing our part to prevent the spread of COVID-19, we can continue to learn together, safely, on campus. We thank our community for its continued support and cooperation with the policies and procedures outlined in this plan.

Crisis Response Team

Dr. Katie Heet
Head of School

Susan Miranti
Board of Trustees, President

Dave Bishop
Board of Trustees

Dr. Jessica Bircham Isley
Summit Parent

Sarah Leighninger
Summit Faculty

Whitney Wiese
Summit Administration

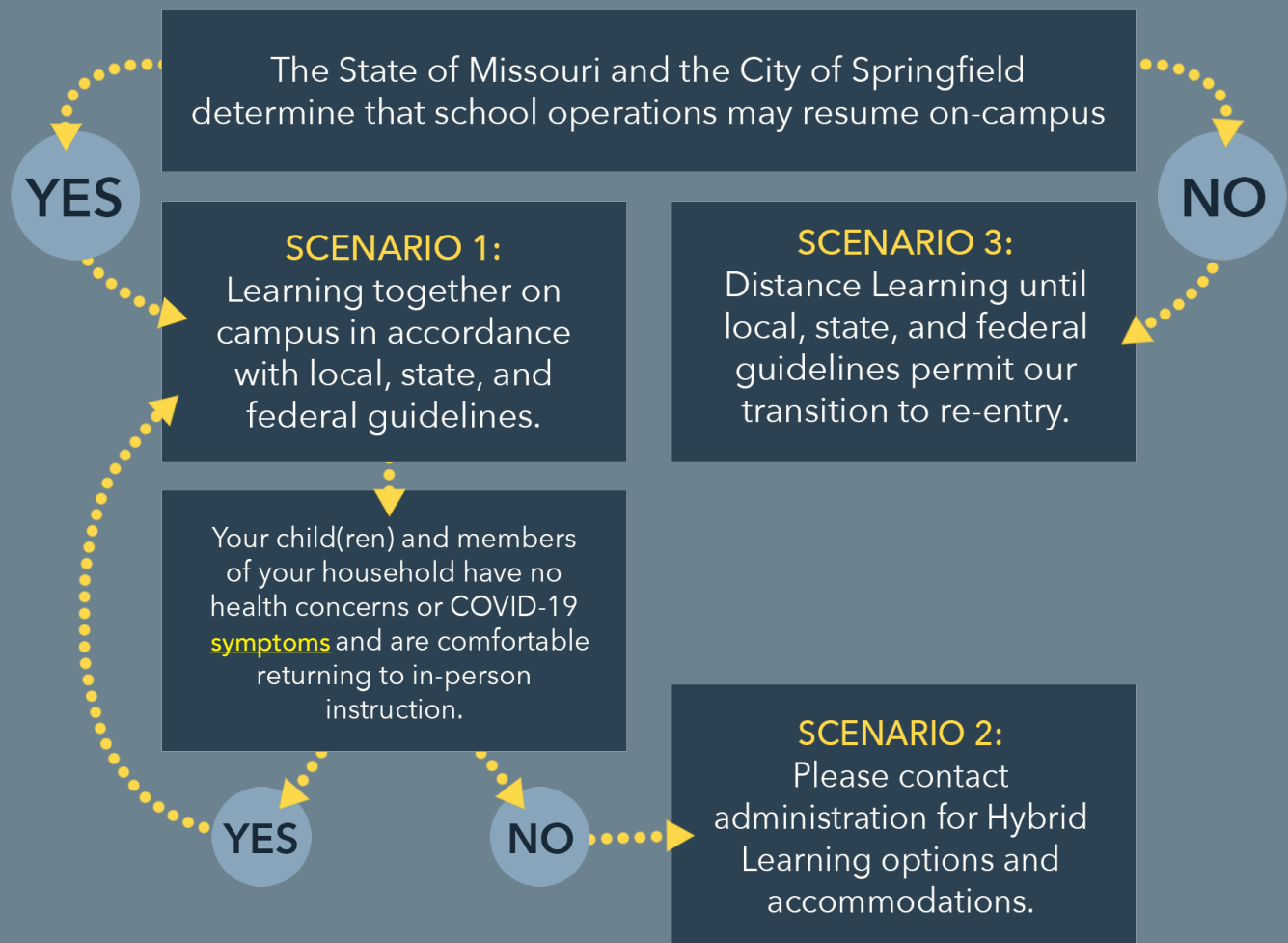
The Summit

Re-Entry Plan Overview

The Summit continues to evaluate and plan for our safe re-entry following the guidelines of the CDC, WHO, and local government and health organizations. We are preparing for a return to in-person education with additional health and wellness screenings, policies, and procedures. It is our hope that our students will be able to return to learning in our classrooms, exploring our backyard, and once again engaging (safely) with members of the school community in August.

The Summit will remain flexible as we operate throughout the academic year. Established scenarios include:

- **Scenario 1: On-Campus Learning**
Students return for in-person education with necessary adjustments. This model is active for all students.
- **Scenario 2: Hybrid Learning**
Isolated grade levels or divisions may participate in a blend of both in-person and remote learning experiences. Hybrid Learning is currently active for individual middle and high school students.
- **Scenario 3: Distance Learning**
All students shift to Distance Learning based on risk assessment. This model is not currently active. To learn more about determining factors for risk levels, please review [The Summit's COVID-19 Response Plan](#).



A Safe Return to Campus

The Summit is committed to a safe, full-time return to campus. We are well prepared to make the necessary adjustments for returning our students to campus while prioritizing the health and safety of our community this fall. Preparations include but will not be limited to:



Maintaining small class sizes of 18 or fewer students



Educating students and families on best practices within our campus to prevent spread of germs



Conducting temperature checks and monitoring symptoms of employees, students, and visitors while on campus

Parents/guardians and employees should conduct self-screening of household members at home prior to coming to school



Modifying traffic patterns to decrease density within our hallways and learning spaces



Utilizing our spacious facilities for optimal physical distancing



Monitoring health conditions of employees, students, and visitors



Enhancing our technology resources to facilitate learning in a safe environment, including extended WiFi capabilities for outdoor learning



Implementing new procedures for sick students, including dedicated isolation spaces



Expanding professional development for our employees

While specific decisions and plans will be finalized and modified as necessary in the coming weeks as more information and updated public health guidelines are issued, strategies are being implemented to ensure the health, wellness, and safety of community members. Strategies include but will not be limited to:

Disinfecting and Sanitation

- All door handles, railings, and high contact surfaces will be thoroughly cleaned and sanitized before students arrive, throughout the day, and after dismissal
- Classroom spaces will be thoroughly cleaned, with surfaces being disinfected or wiped down between student use
- All toys and equipment will be disinfected or wiped down between student use
- Playground equipment will be sanitized between groups
- Facilities improvements include increased EPA-recommended disinfectants, an atomizing backpack fogger for sanitizing learning spaces, and higher MERV-rated HVAC filters
- Daily professional disinfecting services

Personal Hygiene

- Faculty will review proper handwashing techniques and physical distancing measures with students
- Increased student hand washing
- Bathrooms are now equipped with touchless faucets
- Disinfecting supplies and hand sanitizing stations will be available on campus
- Additional signage throughout the building and at water-bottle filling stations, bathrooms, and sinks

Physical Distancing and Face Masks

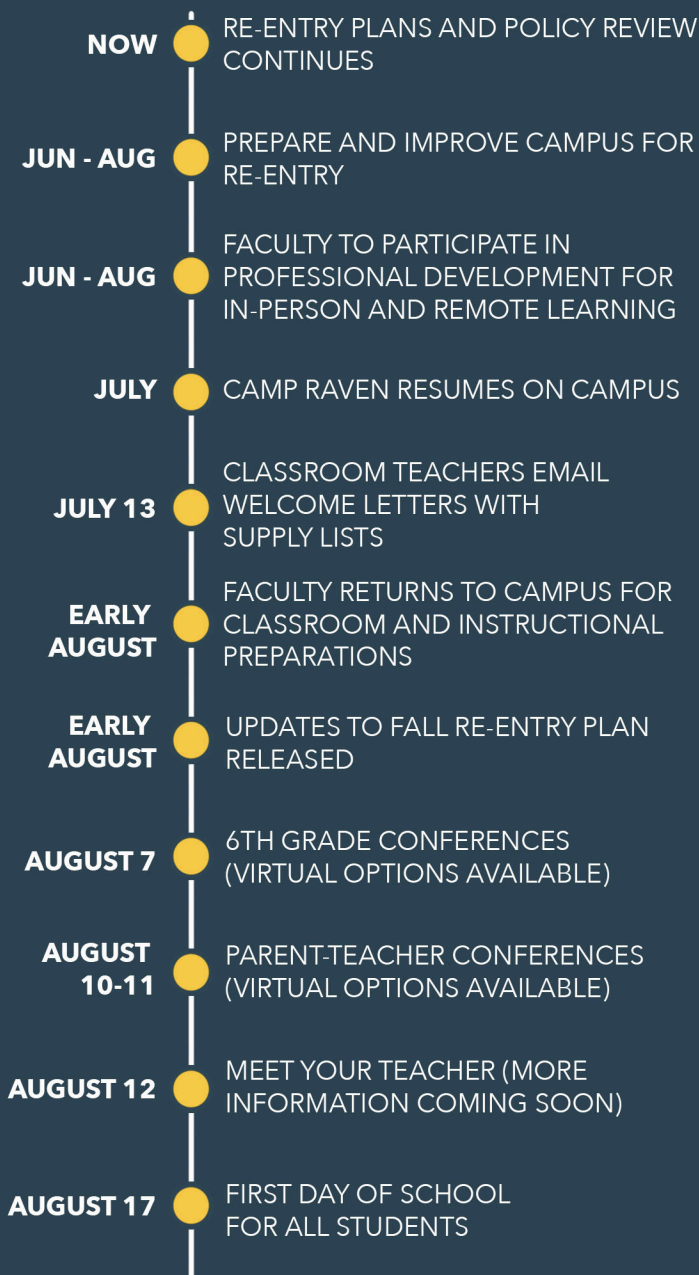
- Students and employees will practice physical distancing as appropriate in class and when traveling throughout the building
- Staggered lunch in individual spaces and recess times with designated play spaces to avoid commingling of groups
- Students' use of face masks subject to parental discretion
- Employees required to wear face masks when screening temperatures and moving throughout the building

These guidelines are subject to change in accordance with local, state, and federal requirements.

A Safe Return to Campus

Continued

WELCOME BACK TIMELINE FOR CAMPUS RE-ENTRY



An updated school calendar with more information on Back to School events will be released to families in updated Fall Re-Entry Plan in August.

Carline Procedures

Drop off time is between 8:30 and 8:50 a.m.

Summit employees will administer student temperature checks prior to entry

If no fever is confirmed, students will enter the building. Parents may leave the parking lot once their student(s) have entered the building.

Students with temperatures 100.4° F or above will not be permitted in the building. These students may return to campus after they have been free of an elevated temperature without medication for 48 hours.

Fun Zone

Before and after school Fun Zone will still be available, but with limited spaces and pre-registration only. There will be no drop-in availability. The Summit will be prioritizing availability for essential workers and asks that families who do not require Fun Zone make alternate arrangements so that we may serve our families in the medical field and other essential employment first.

More information on Carline and Fun Zone procedures will be shared with families in updated Fall Re-Entry Plan in August.

Re-Entry

Frequently Asked Questions

What do I do if someone in my household tests positive for COVID-19?

The Springfield-Greene County Health Department (SGCHD) will notify The Summit of any potential exposure within our school community. However, for the health, wellness, and safety of our students, employees, and families, we ask that any family with a presumed positive COVID-19 diagnosis within their household notify The Summit administration immediately. This will expedite The Summit's response to any potential exposure and help us limit the spread of COVID-19 on our campus. Your information will be kept strictly confidential consistent with all school communications of other communicable diseases.

What if someone in The Summit community tests positive for COVID-19?

If The Summit receives notification from the Springfield-Greene County Health Department (SGCHD) that our school may have been exposed to a positive case of COVID-19, the campus will immediately close for at least one business day for thorough disinfecting. The Summit will follow all SGCHD's recommendations and requirements for closure to prevent the spread of COVID-19. All families will receive notification of campus closure, and teachers will provide instructional guidelines electronically.

Once The Summit has consulted with SGCHD and the Crisis Response Team, additional timely communication will be sent. Families will be notified if further campus closure is needed or whether certain grades, divisions, or the entire school will move to Distance Learning for the necessary quarantine period as recommended by the SGCHD.

What if someone in my household has been exposed to someone with COVID-19?

If the Springfield-Greene County Health Department notifies your household of a possible COVID-19 exposure, the contact tracer will provide recommendations for you and your household. If your household makes the decision to self-isolate due to potential COVID-19 exposure, please reach out to administration and your classroom teacher for accommodations and plans for educational delivery.

What if someone in my household is considered high risk?

If you have a high risk individual in your household, and you have concerns about your child(ren) returning to campus, please reach out to administration and your classroom teacher for accommodations and plans for educational delivery.

How do I support health and wellness at home?

Encourage proper handwashing techniques at home. Conduct self-screenings of household members prior to coming to school each morning, i.e. check for temperature of 100.4° F or higher and other [COVID-19 symptoms](#). Talk with your child(ren) about the changes they may encounter at school (temperature screenings at carline, physically distancing on campus). Teachers will be talking with students about the changes in order to encourage a positive attitude and to acknowledge any apprehension students may have, but the home-school partnership will be essential in helping ease students' transition to new policies and procedures while at school.

Information To Be Included in August Re-Entry Plan Update:

- Official School Calendar: Updated information on back-to-school events
- Carline: Updated map and procedures
- Hot Lunch: Menu, ordering links, and updated procedures
- Fun Zone: Registration link and updated procedures
- Face Mask Policy Update
- Distance Learning Plan



www.thesummitprep.org